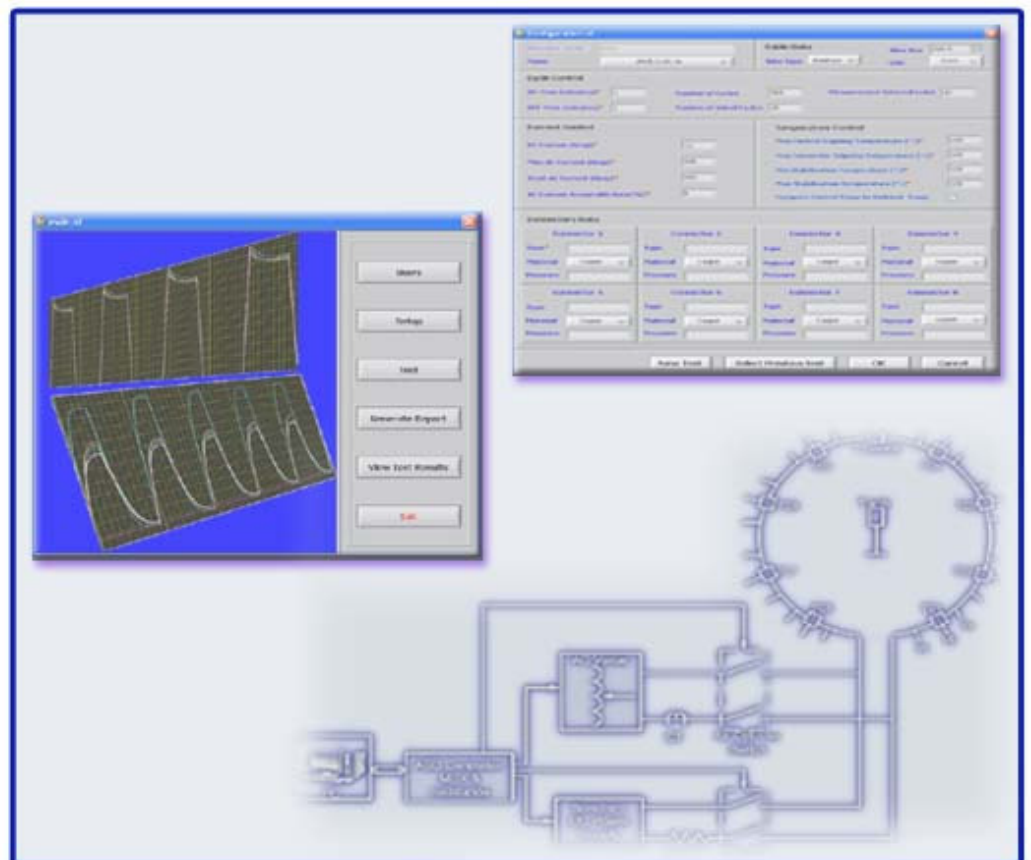


ASD

Connector Test System



Integrated Systems Design and Development

ASD

Connector Test System

Connectors are used for making electrical connections between Aluminum to Aluminum or Aluminum to Copper conductors used on distribution and transmission lines for electric utility.

ASD's Connector Test System verifies the connector's electric characteristics; voltage, current, resistance and temperature.

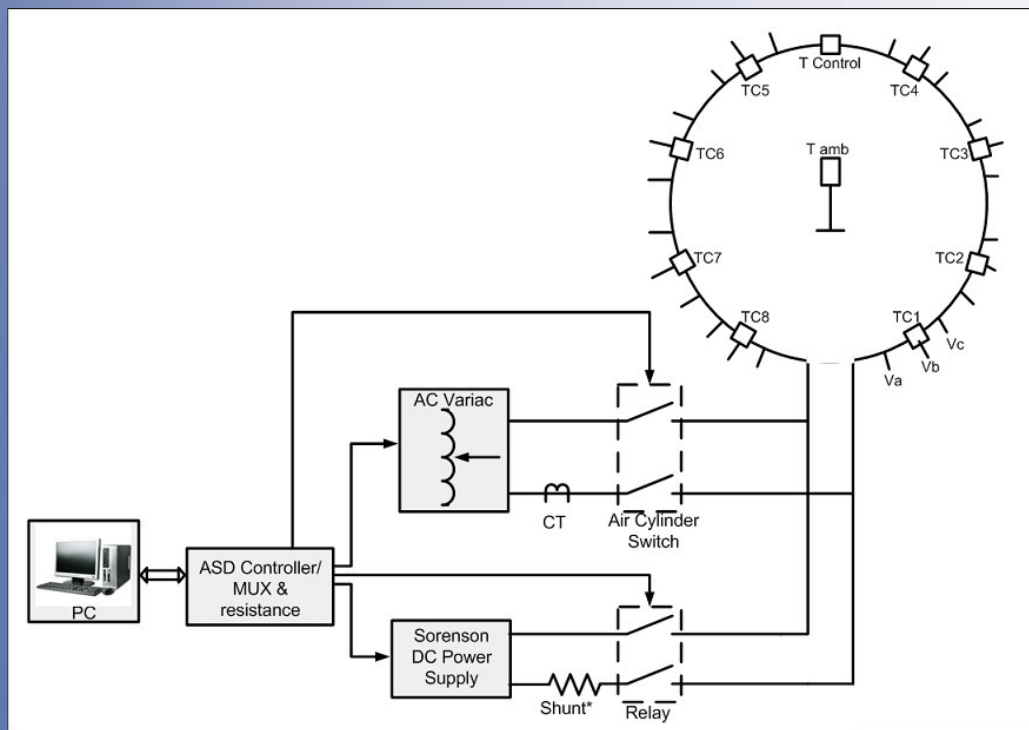
For a defined On Time resembling heating cycle, AC current is supplied and temperature is measured on connectors in addition to ambient and control temperature. Again for a defined Off Time resembling cooling cycle, DC current is supplied, voltage across three points around connector are measured (v_a, v_b, v_c), knowing the current, three resistances are calculated for each connector (R_{ab}, R_{bc}, R_{ac}). Temperature at each connector is measured as well.

The system is a strong hardware and software integration. A rugged controller designed by ASD holds control over the system's hardware function and communication between hardware and software

Hardware

The single line diagram shown below gives a clear view. The main hardware parts of the system are:

- ASD Controller/MUX/Resistance
- DC Power Supply
- Temperature Modules



Automation Systems & Diagnostics, Inc
1021 Davis Drive, Apex, NC 27523
Phone: 919-842-2613, Fax: 919-380-1054
www.asdpower.com

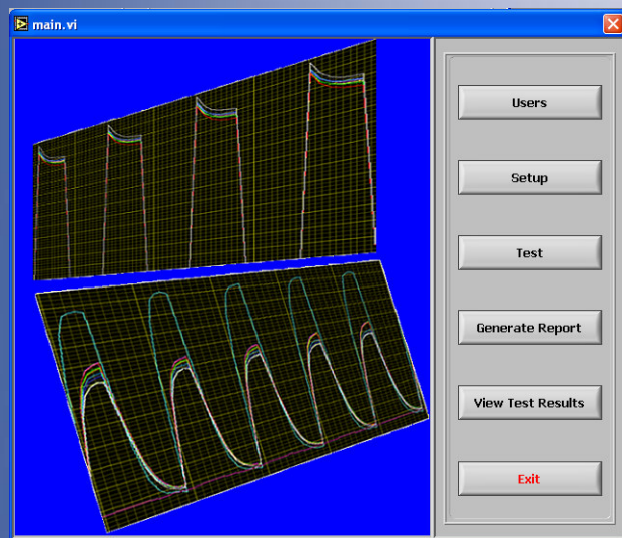
Connector Test System

Software

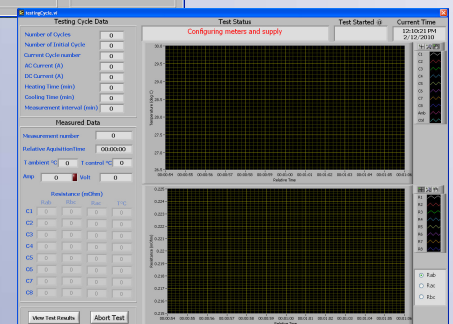
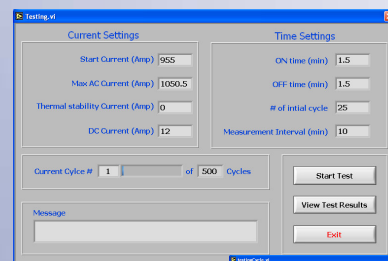
The system is equipped with user friendly software allowing you of:

- Performing measurements and taking readings automatically.
- Performing temperature corrections automatically.
- Showing real-time graphical and indicator value displays of voltage and temperature readings.
- Storing test results automatically.
- Viewing graphical analysis of current and previous test results.
- Generating extensive excel report for selected test's results. The report includes measured values, calculated values and graphical analysis for each connector.

You can initiate a new test with new test parameters or previously specified ones. Results and graphs are saved. Report and graphical analysis can be generated for any performed test.



The software offers a window to specify user configurable parameters that help control the system and perform the right test procedure regarding the cable's specifications.



Automation Systems & Diagnostics, Inc
1021 Davis Drive, Apex, NC 27523
Phone: 919-842-2613, Fax: 919-380-1054
www.asdpower.com